

GREEN ROUTES

**“A Regional Network of Shared Paths
For Everyone”**

Steven E. Miller, LivableStreets Alliance

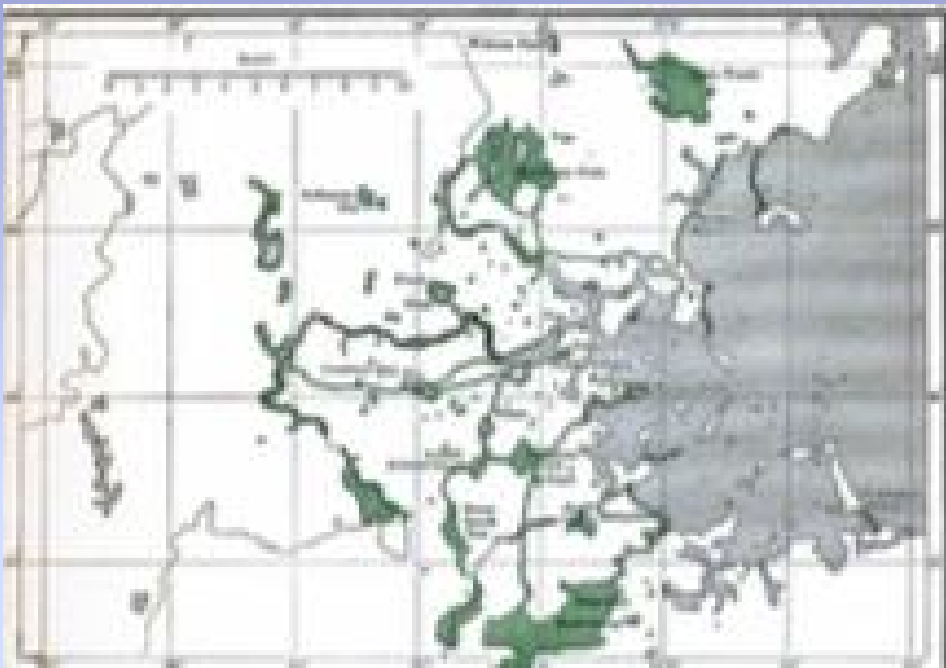
www.LivableStreets.info
Steve@LivableStreets.Info

LivableStreets Alliance

- “ We believe urban transportation has the power to make cities better places to live, work, shop, and play.
 - . A better balance between modes – walking, cycling, transit, cars/trucks.
 - . Provide safe, convenient, and affordable transportation options for all people.
- “ **Inspire a vision**
- “ **Build partnerships**
- “ **Empower communities**
- “ **Create change**

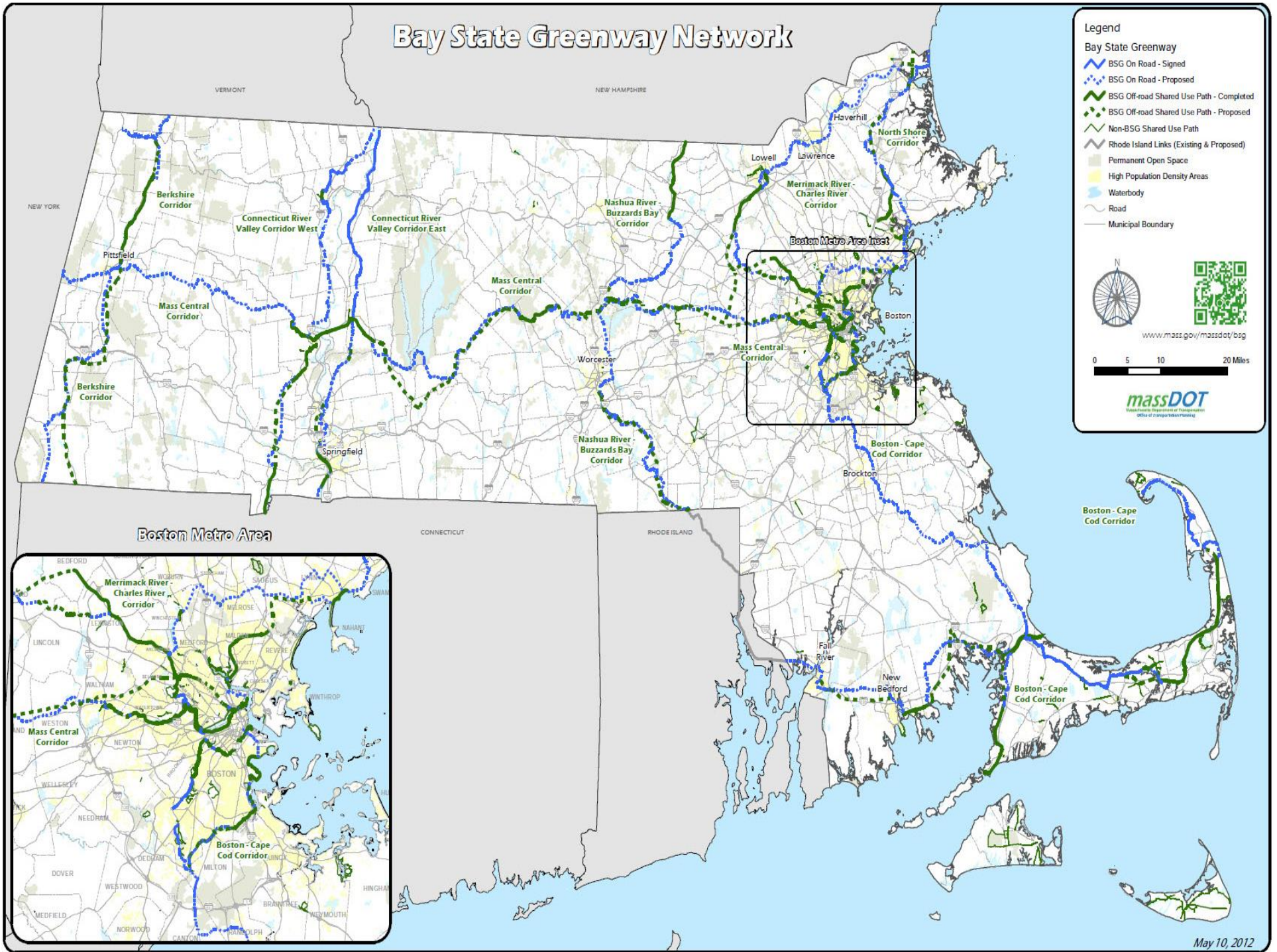


Long History: Olmsted/Eliot...MDC



Eliot's visionary plan incorporated three major rivers and six large, mostly connected open spaces (green spaces) on the outskirts of the region. This plan also reclaimed Revere Beach from private to public use, protected the islands of the Bay and proposed "numerous small squares, play grounds and parks in the midst of the dense population (Eliot, 1902, p. 381)".

Bay State Greenway Network



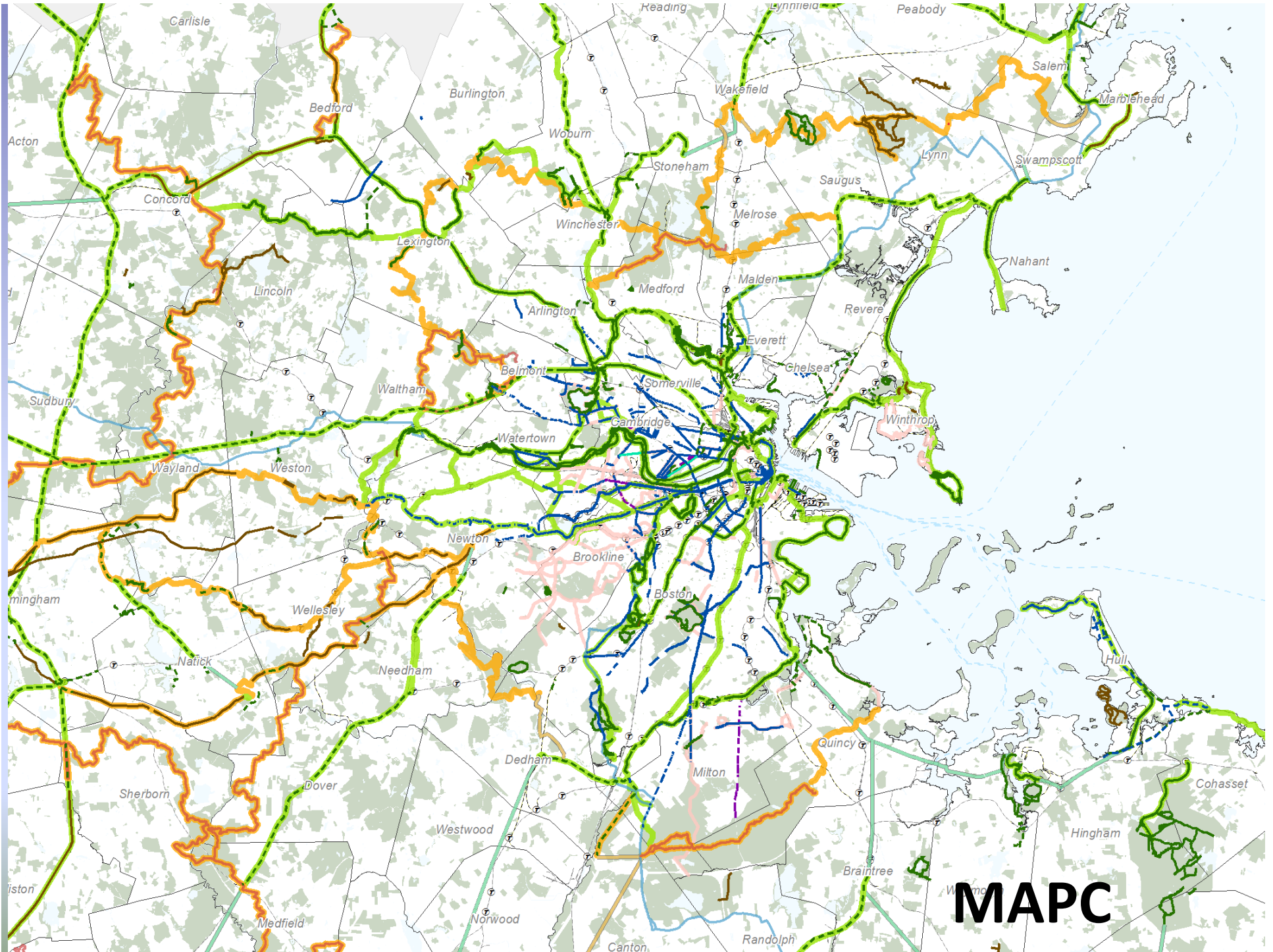
Legend

- Bay State Greenway
- BSG On Road - Signed
- BSG On Road - Proposed
- BSG Off-road Shared Use Path - Completed
- BSG Off-road Shared Use Path - Proposed
- Non-BSG Shared Use Path
- Rhode Island Links (Existing & Proposed)
- Permanent Open Space
- High Population Density Areas
- Waterbody
- Road
- Municipal Boundary

www.mass.gov/massdot/bsg

0 5 10 20 Miles

massDOT
Massachusetts Department of Transportation
Office of Transportation Planning

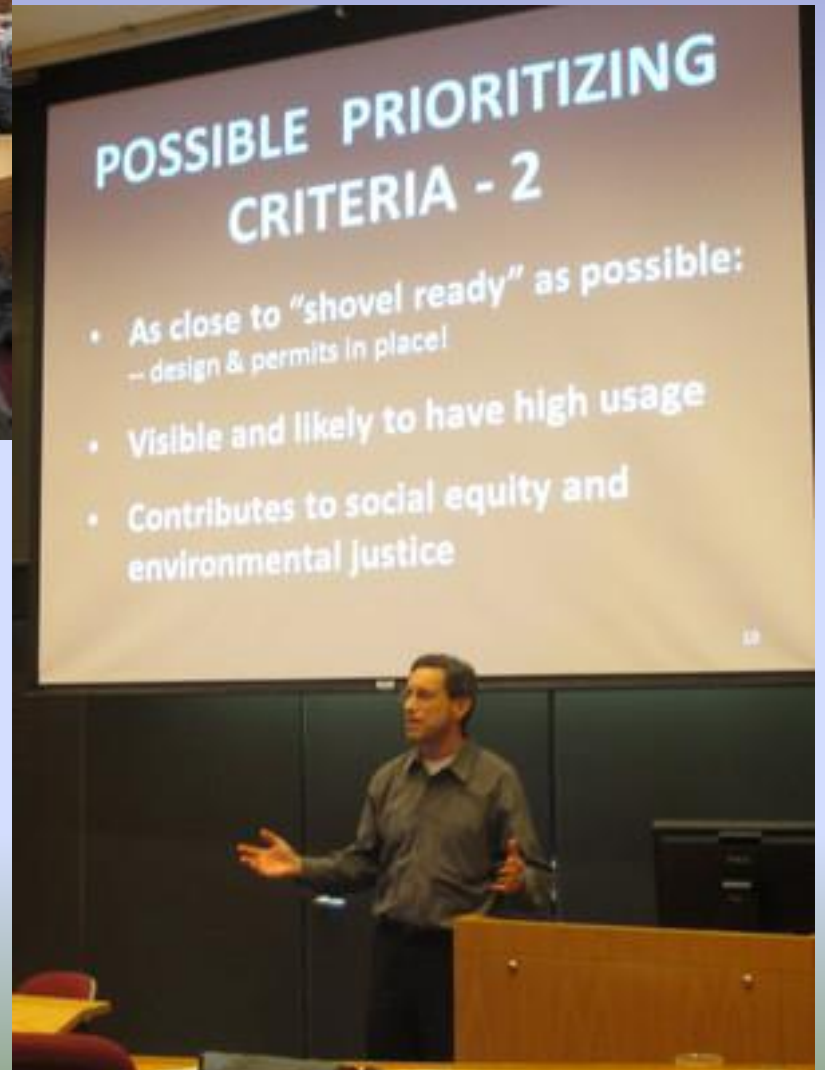


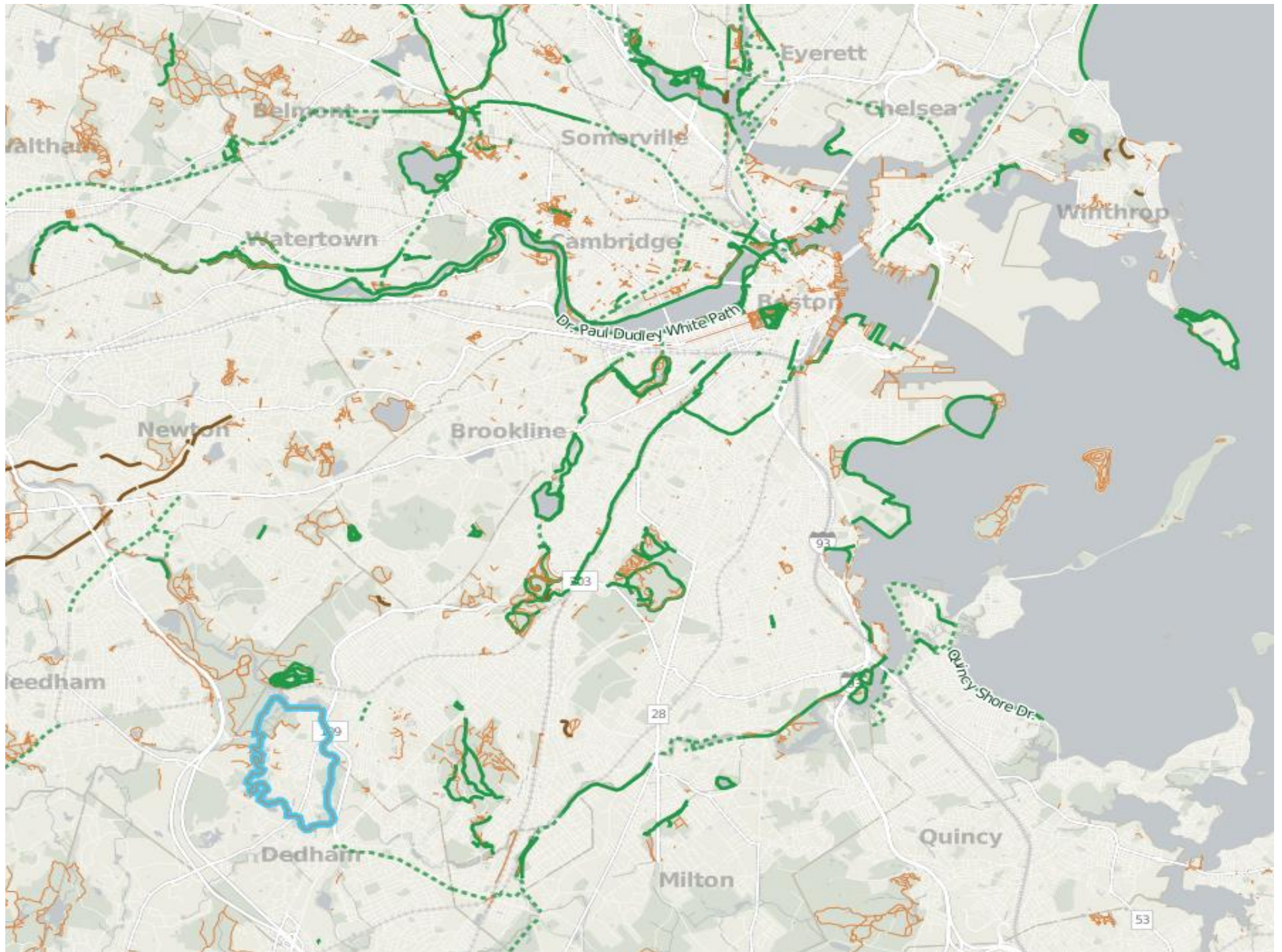
MAPC



POSSIBLE PRIORITIZING CRITERIA - 2

- As close to "shovel ready" as possible:
 - design & permits in place
- Visible and likely to have high usage
- Contributes to social equity and environmental justice





GREENWAYS





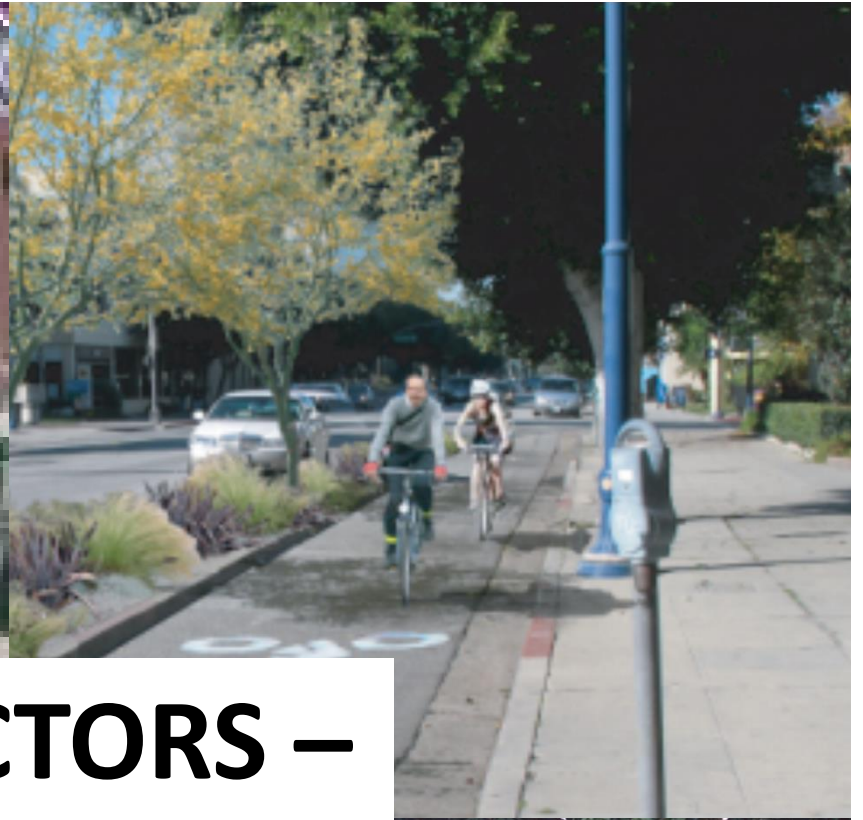
Dense enough
to be
comprehensive;
Simple enough
to be
comprehensible.

Big enough
to be
Inspirational;
Small enough
to be
believable.

Greenway Links in the Urban Core - Closing the Gaps Map



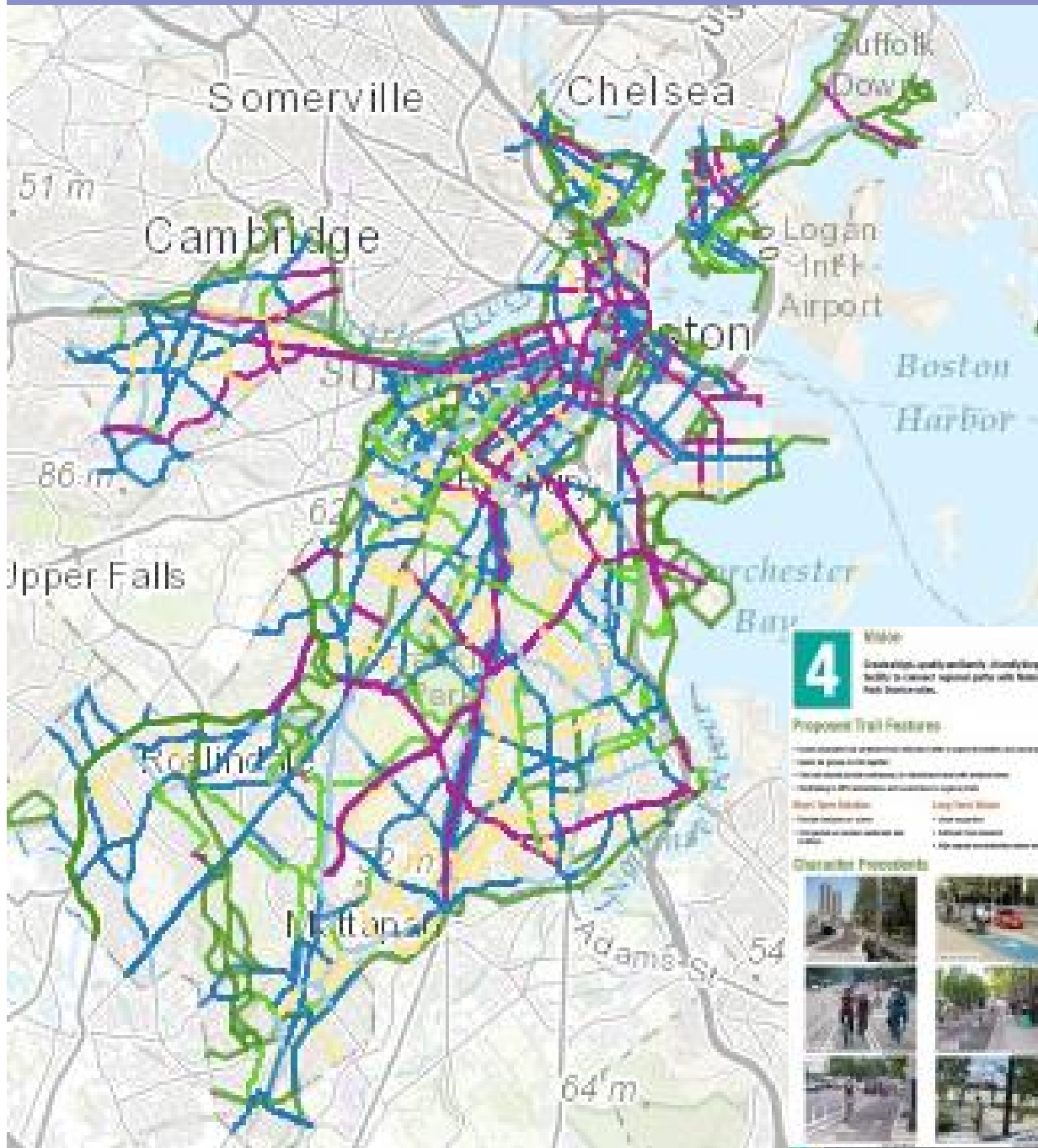
Relatively minor upgrades that will complete longer segments



CONNECTORS – GAPS & LINKS



CITY OF BOSTON BICYCLE NETWORK PLAN – 30 YR BUILD OUT



CONNECT HISTORIC BOSTON

4 **Missive**
Grassroots, locally-led, community-driven bicycle facility to connect regional parks with National Park System.

Proposed Trail Features

- Overhead power lines, overhead cables, and overhead wires
- Overhead power lines, overhead cables, and overhead wires
- Overhead power lines, overhead cables, and overhead wires
- Overhead power lines, overhead cables, and overhead wires

Map's Open Edition

- Overhead power lines
- Overhead power lines
- Overhead power lines
- Overhead power lines

Map's Closed Edition

- Overhead power lines
- Overhead power lines
- Overhead power lines
- Overhead power lines

Characteristic Precedents

A grid of six small images showing various bicycle trail designs, including paved paths, green-painted lanes, and trails through parks and urban settings.



GREEN ROUTES

Regional Network of Shared Paths
For Everyone

>www.GreenRoutesBoston.Org<

GreenRoutes@LivableStreets.Info

LivableStreets Rethinking urban transportation

www.LivableStreets.info

Steven Miller